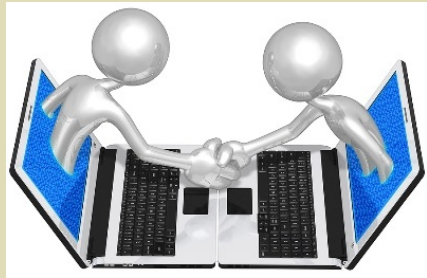




# MYCI

## Session 4

# Agenda



- e-Notes
- Re-Cap – Where are We Now?
- Analysis of Evidence
- Professional Learning Cycle
- Wrap-Up - Ticket Out The Door

# MYCI Project Leads

Recorded on  
iPad With:

- Debbie McAiney
  - Student Success Consultant
- Justin Levack
  - eLearning Contact
- Kyle Pearce
  - Middle Years Mathematics Coach
- Andrea Lewis-Longmuir & Shelley Pike
  - Instructional Coaches



[View In iTunes](#)

Free

# e-Notes



1. We are using Adobe Connect as a way for MYCI Teams to communicate with us via chat windows. We will not be able to communicate verbally to avoid any disruptions with other teams.
2. We encourage groups to use the chat box to share their ideas with us and the other MYCI Teams in the board.
3. We are using a series of videos to allow groups to advance through the session at their own pace.

# Where are we now?

## *Planning*

Vision statement, Inquiry Question and Theory of Action.

## *Collecting Evidence*

Demographic, School process, student learning data and perceptual

## *Analyzing Evidence*

What does our evidence tell us in regards to our Inquiry Question?



# How to look at your Data

## **Individually: 5-10minutes**

- Each participant will look at their data and complete an **It Says, I say, And So...** Protocol organizer.

## **Within your groups: 30 minutes**

1. Each participant will present their reflections from the organizer.
2. After the presenter has completed their discussion the group will respond to the statements made. Use these prompts to guide your response:
  - What did you learn from listening to your colleagues that was interesting or surprising?
  - What new perspectives did your colleagues provide?
3. Follow the same pattern until all members of the group have had a chance to be the presenter and discuss their selection.



# Where to?

- Where does the data lead your group?
- What changes in instructional practice would you like to try now?
- How can your group better serve your student learning needs?
- How can you adjust practice and begin collecting data again to continue measuring impact?

**The Collaborative Inquiry Process Uses  
The Professional Learning Cycle**

# Professional Learning Cycle

## PROFESSIONAL LEARNING CYCLE

Plan



Act



Building Capacity  
Leadership  
Facilitation



Reflect



Observe



# Planning Ahead for Our Sharing Day in May

- This time is provided to prepare an overview of your collaborative inquiry.
- Use the following prompts to guide your sharing of information:
- ***Our collaborative inquiry was about...***
- ***It involved us...***
- ***It was prompted because...***
- ***We felt it was important because...***
- ***We believed... (your theory of action)***



- ***We found out...***
- ***Our most valuable lesson/ learning occurred when...***
- ***We still do not know...***
- ***We are still puzzled about...***
- ***We recommend...***
- ***Our next steps.....***

Dan Fister, Superintendent

# Wrap up

- Ticket out the door
- Sharing – Over Adobe Connect Chat – please communicate any results, thoughts, problems or successes your group has had today
- Post Survey – have students use the following link (please have survey completed by May 1st )



# Analyzing Evidence (Data)

## Steps in Analyzing the Evidence

### Organize Data

Clean it up, sort it, compile it in some useful way

### Read the Data

Look at it for completeness, any gaps/problems?

### Describe the Data

As a group – make statements about data. Don't interpret. "I observe that..." or "I can count..."

### Classify the Data

Know if your data sources are quantitative or qualitative

### Interpret the Data

What does the data tell us about our problem?

Have any changes in practice had an impact on your original Inquiry Question and Student Need?

