



Tuesday June 12th, 2012

SCHEDULE

WWW.MRPEARCE.CO.NR

Download Handout #1 From Website
[9.3LastNameEQAOMiniMock3.pdf](#)

Learning Goals:

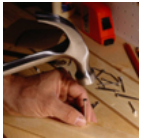
Today we will attempt a few problems from the 2008 January EQAO Test and share our solutions via Apple TV



Mind Buster:
Warm Up



Unit 9 - EQAO & Exam Prep
Sec. 9.3 - EQAO Mini-Mock Test #3



Constructive Criticism:
How Can We Improve?



**1**

Which of the following fractions is **not** equivalent to $\frac{10}{30}$?

- a $\frac{2}{6}$
- b $\frac{15}{35}$
- c $\frac{1}{3}$
- d $\frac{100}{300}$

Winter 2008 #3

2

Aidan is buying a new CD player. The CD player was selling for \$84.79 and now is on sale for 25% off. Which of the following is closest to the total cost of the CD player, including 15% sales tax?

- a \$54.05
- b \$63.59
- c \$73.13
- d \$74.49



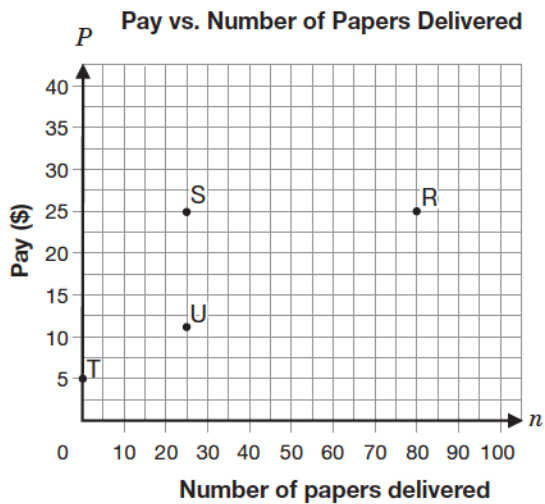
Winter 2008 #6

3 What is the solution to the equation
 $3x + 80 = 12x - 1$?

- a -27
- b -9
- c 9
- d 27

Winter 2008 #8

4 Mia delivers the local newspaper. Her base pay is \$5 per week, and she gets \$0.25 per paper.

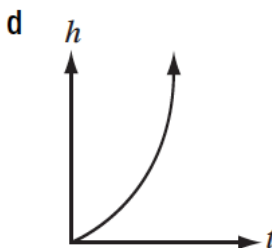
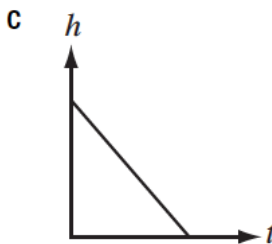
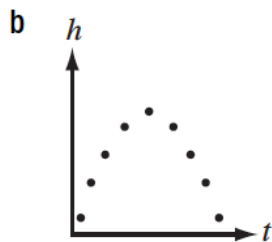
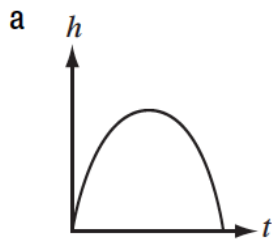


Which of the points on the graph represents Mia's pay for delivering 25 newspapers in a week?

- a Point R
- b Point S
- c Point T
- d Point U



- 5** Which of the following graphs represents a linear relation?



- 6** A tap is leaking into a pail. The height of the water in the pail is represented by the equation $h = 0.5t + 2$, where h represents the height of water in the pail, in cm, and t represents the amount of time the tap has been leaking, in minutes.

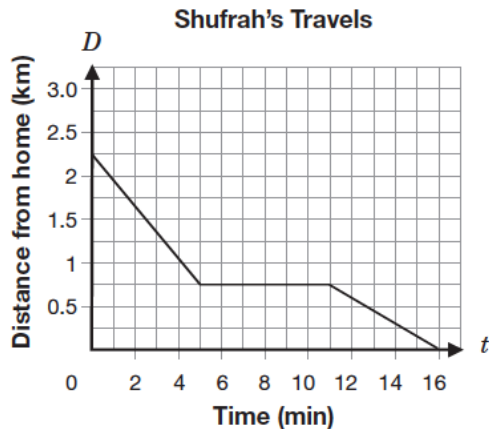
What is the height of water in the pail if the tap has been leaking for 56 minutes?

- a 28 cm
- b 30 cm
- c 108 cm
- d 114 cm



Winter 2008 #14

- 7** The relationship between t , the number of minutes Shufrah travels, and D , the distance she is from home, is shown on the grid below.



Which of the following statements best describes the way Shufrah travels?

- a While travelling toward her home, Shufrah rides her bike, stops and then walks.
- b While travelling toward her home, Shufrah rides her bike, walks and then rides her bike.
- c While travelling away from home, Shufrah rides her bike, stops and then walks.
- d While travelling away from home, Shufrah walks, rides her bike and then walks.

Winter 2008 #7

- 8** Germaine wants to calculate the area of the shape shown below. It is composed of a rectangle and two semicircles.



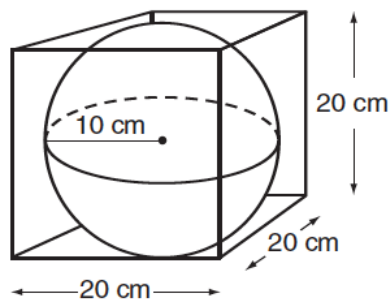
Which of the following pairs of expressions should Germaine use to determine the area of the shape?

- a $2(l + w), \pi r^2$
- b $2(l + w), 2\pi r$
- c $lw, 2\pi r$
- d $lw, \pi r^2$



Winter 2008 #19

- 9** A soccer ball is packaged in a cube-shaped box.

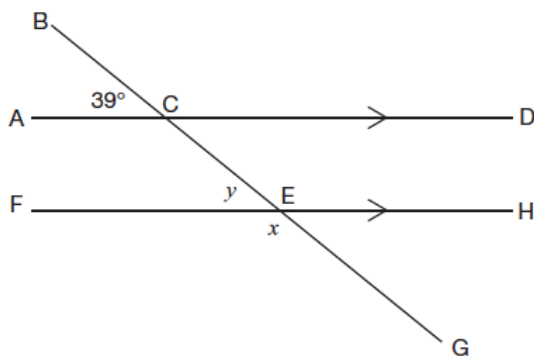


Which is closest to the volume of the space in the package that is **not** occupied by the ball?

- a 3811 cm^3
- b 4000 cm^3
- c 4187 cm^3
- d 8000 cm^3

Winter 2008 #20

- 10** The measure of $\angle ACB$ is 39° .



What are the values of x and y ?

- a $x = 39^\circ$ and $y = 141^\circ$
- b $x = 39^\circ$ and $y = 39^\circ$
- c $x = 141^\circ$ and $y = 141^\circ$
- d $x = 141^\circ$ and $y = 39^\circ$



Trip Planning

The Lucas family is going on a trip to Manitoba and back. It is 1624 km from home to Manitoba.

Determine the total cost of the gas for the Lucas family's trip to Manitoba and back, if the cost of gas is 83¢ per litre and the car uses 9.7 litres per 100 kilometres.

Show your work.

