



Wednesday June 6th, 2012

SCHEDULE

WWW.MRPEARCE.CO.NR

Download Handout #1 From Website
[**9.2LastNameEQAOMiniMock2.pdf**](#)

Learning Goals:

Today we will attempt a few problems from the 2007 June EQAO Test and share our solutions via Apple TV



Mind Buster:
Warm Up



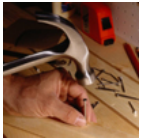
Unit 9 - EQAO & Exam Prep
Sec. 9.2 - EQAO Mini-Mock Test

GET READY...

Education Quality and
Accountability Office



IN 4 DAYS

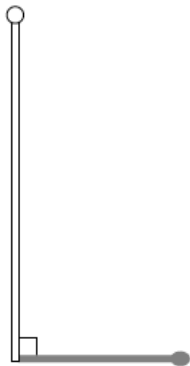


Constructive Criticism:
How Can We Improve?



Spring 2007 #1

- 1** On a sunny day, a flagpole that is 5 m tall casts a shadow that is 2.4 m long, as shown below. At the same time, a tree next to the flagpole casts a shadow that is 3.6 m long.



Which of the following proportions can be used to determine h , the height of the tree, correctly?

- A $\frac{2.4}{5} = \frac{3.6}{h}$
B $\frac{2.4}{5} = \frac{h}{3.6}$
C $\frac{5}{6.0} = \frac{3.6}{h}$
D $\frac{h}{5} = \frac{2.4}{6.0}$

Spring 2007 #2

- 2** DJ Kool is a disc jockey who charges the same amount for each hour. For a 4-hour dance, he charges \$522.00. How much does DJ Kool charge for a 7-hour dance?

- F \$298.29
G \$913.50
H \$2088.00
J \$3654.00



Spring 2007 #3

3 Alex makes necklaces using coloured beads. The ratio of blue beads to red beads is 3:4, and the ratio of red beads to yellow beads is 4:1.

Alex makes a necklace using a total of 48 beads in the ratios given above. How many yellow beads will she need?

- A 1
- B 4
- C 6
- D 8

Spring 2007 #6

4 Ivan shows his steps in solving the following equation for x :

$$2x + 3 = 7$$

Step 1: $2x + 3 - 3 = 7 - 3$

Step 2: $2x = 4$

Step 3: $x = 4 \times 2$

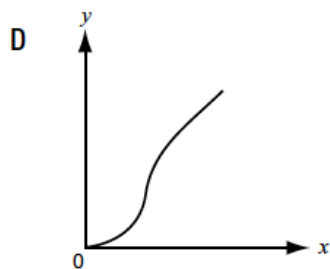
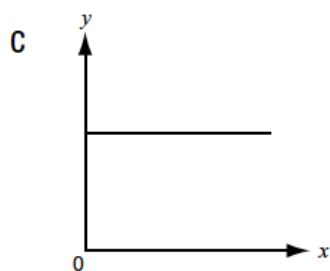
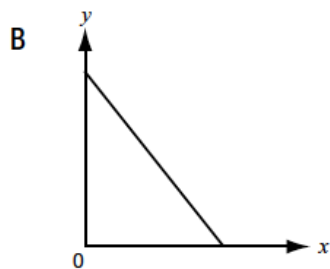
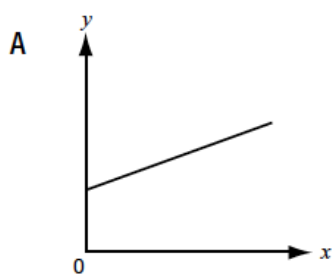
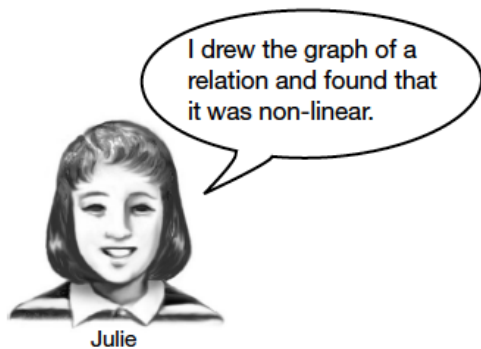
Step 4: $x = 8$

In which step has Ivan made an **error**?

- F Step 1
- G Step 2
- H Step 3
- J Step 4

5

Which graph does Julie draw?



6

One spring afternoon, Michael records the outside temperature every hour in the table below.

Time (h)	Temperature (°C)
12	9.3
13	11.7
14	14.1
15	16.5
16	18.9
17	21.3



What is the rate of change of the temperature in relation to time?

- A 2.4 °C/h
- B 2 °C/h
- C 0.9 °C/h
- D 0.42 °C/h



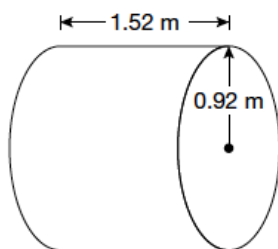
- 7** Ruth works as a translator. She charges her customers a fixed consulting fee of \$20, plus 23¢ per word.

Which expression shows Ruth's charge, in dollars, for translating a document with n words?

- a $(20 + 0.23)n$
- b $(20 - 0.23)n$
- c $20n - 0.23$
- d $20 + 0.23n$

Spring 2007 #18

- 8** An oil tank shaped like a cylinder has a radius of 92 cm and a length of 152 cm, as shown below.



Which of the following is closest to the volume of the oil tank?

- F 0.09 m^3
- G 0.14 m^3
- H 4.0 m^3
- J 12.7 m^3



Winter 2006 #4

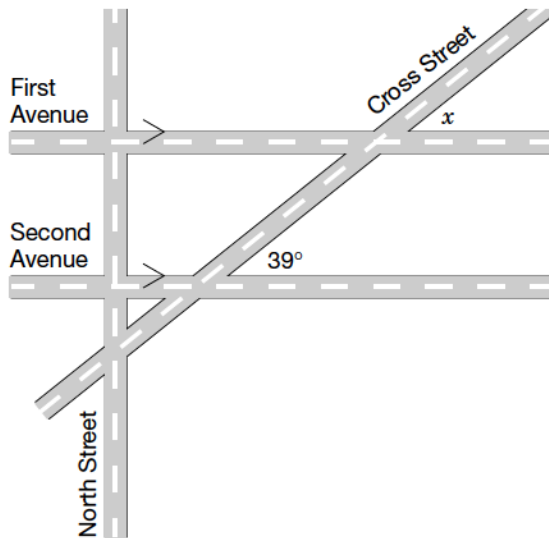
- 9** Expand and simplify the following expression:

$$3(2y + 4) - 12$$

- a 6
- b $6y$
- c $6y - 8$
- d $18y - 12$

Spring 2007 #10

- 10** In the map below, First Avenue and Second Avenue are parallel.



What is the value of x ?

- F 321°
- G 141°
- H 51°
- J 39°

Up in the Air

Madiha throws a ball into the air one time. The height of the ball above ground is measured at six different times. The table below shows the data that Madiha collects.

Height vs. Time

Time (sec)	Height (m)
0	1.6
0.5	7.9
1.0	11.7
1.5	13.0
2.0	11.8
2.5	8.1

Determine whether the relationship represented by the table is linear or non-linear. Justify your answer.

